

# Appliance Family

## ALL-IN-ONE BACKUP AND DISASTER RECOVERY APPLIANCES

Affordable and easy to use data protection focused on the needs of small and medium-sized companies with the enterprise-level power to grow as your business grows. Our appliances support:

- Entry-level desktop to redundant rack-mounted systems
- Over 100 versions of operating systems and applications supported
- No backup tax
- Scalable grid-based enterprise-level solution
- Adaptive Deduplication offers storage and in-flight-based data reduction
- D2D2x supports on-premise and cloud-based disaster recovery
- Private and public single and multi-tenant cloud-based disaster recovery
- Flexible deployment options allow optimization for your environment
- Customer-obsessed service with a single company responsible for your warranty and support

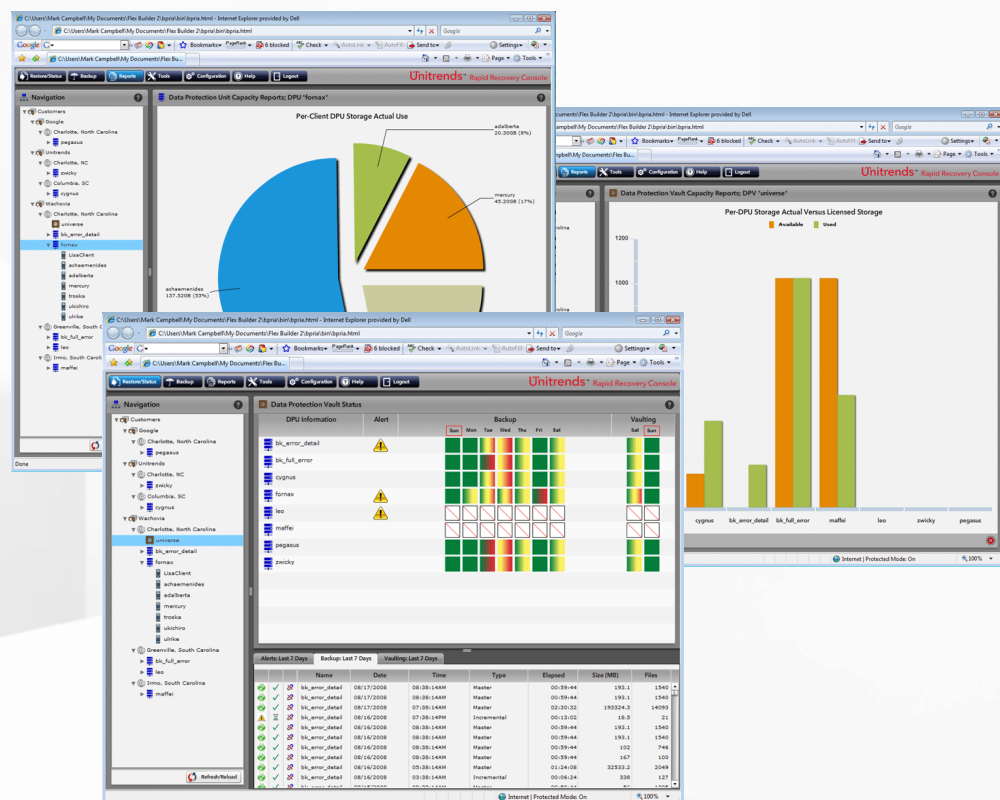
## NO BACKUP TAX

Imagine not having your backup vendor reach into your pocket every time you adopt a new technology or as your business grows. With Unitrends, you don't have to imagine...

- Not having to pay for features such as deduplication...
- Not having to pay on a per-protected client basis...
- Not having to pay for multiple operating systems...
- Not having to pay for multiple applications...
- Not having to pay for multiple types of storage...
- Not having to pay each time there's a new software release...
- Not having to pay on a per-protected gigabyte basis...

## SCALABLE GRID-BASED ENTERPRISE-LEVEL SOLUTION

Our appliances are designed to work together and be monitored and managed in a web 2.0 single pane of glass user interface. Multiple appliances work together to increase parallel ingest rates and to optimize your LAN. No more buying more capacity than you need - no more worry about forklift upgrades.



Unitrends™

7 Technology Circle  
Suite 100  
Columbia, SC 29203

Phone: 866.359.5411  
E-Mail: sales@unitrends.com  
URL: www.unitrends.com  
Copyright © 2010 Unitrends

## ADAPTIVE DEDUPLICATION

Adaptive Deduplication means that you get the benefits of compression for lower retention and lower duplicate data scenarios and the benefits of deduplication for higher retention and higher duplicate data situations. And you get those benefits without having to buy expensive dedicated deduplication hardware and the time and effort of integrating servers, backup software, storage, deduplication, replication, and other technologies.



## D2D2X: DISK-TO-DISK-TO-ANY

One size doesn't fit all when it comes to business continuity and disaster recovery for small and medium business customers. Our D2D2x technology provides the ultimate in disaster recovery flexibility:

- Do you want disaster recovery support via a multi-tenant public cloud for \$0.49 per protected gigabyte per month? Our Vault2Cloud offering provides it.
- Do you want disaster recovery support instead via a single-tenant private cloud? We offer the same appliances that support our Vault2Cloud public cloud service directly.
- Do you have two or more active sites and would like to use the same appliance for both on-premise business continuity and off-premise disaster recovery for each site? We support cross-vaulting - a technology that enables our appliances to concurrently provide on- and off-premise data protection.
- Do you want to supplement or replace electronic disaster recovery with a rotational archiving solution? We offer disk-based archiving appliances and even support tape-based archiving on some of our units.

## LIFETIME UPGRADE™

Lifetime Upgrade is a form of hardware platform investment protection which is offered on all of our RAID-based appliances that have a corresponding higher level model. This means that for every RAID-based lower capacity model not using our larger capacity disk drives that there is a higher capacity model which may be upgraded to while a support contract is in place.

Of course, all of Unitrends appliances are scalable via our light RAIN (Redundant Array of Inexpensive Nodes) technology that enables users to monitor and manage from one to hundreds of our appliances in a single pane of glass. We offer Lifetime Upgrade for those customers who want a guaranteed upgrade to a higher capacity model regardless of this scalability.

Here's a practical example of how Lifetime Upgrade works. A customer who purchases a Recovery-631 has the ability to upgrade that Recovery-631 to a new appliance with equal or greater capacity as long as their support contract is in place. This means that in two years, if Unitrends is shipping a higher capacity unit at that time, the customer may upgrade to that unit for the price specified for the Lifetime Upgrade at the time that the Recovery-631 was purchased.

The following table depicts the applicability of Lifetime Upgrade with respect to each of our appliances.

Appliance	Form Factor	Lifetime Upgrade™	Upgrade To	Drive Type	RAID Protection	Raw Capacity (TB)
Recovery-171	Desktop: Small		Add Unit	750GB		0.5
Recovery-211	Desktop: Small	✓	Recovery-311	1TB	RAID-1	0.75
Recovery-311	Desktop: Small		Add Unit	1.5TB	RAID-1	1.25
Recovery-411	Desktop: Large	✓	Recovery-511	750GB	RAID-10	1.25
Recovery-511	Desktop: Large		Add Unit	1.5TB	RAID-10	2.75
Recovery-611	Rack: 1U	✓	Recovery-711	750GB	RAID-10	1.25
Recovery-711	Rack: 1U		Add Unit	1.5TB	RAID-10	2.75
Recovery-621	Rack: 2U	✓	Recovery-721	750GB	RAID-1/RAID-6	4.5
Recovery-721	Rack: 2U		Add Unit	1.5TB	RAID-1/RAID-6	9
Recovery-631	Rack: 3U	✓	Recovery-731	750GB	RAID-1/RAID-6	7.5
Recovery-731	Rack: 3U		Add Unit	1.5TB	RAID-1/RAID-6	15

### APPLIANCE OVERVIEW

An overview of the high-level features of our appliances is depicted in the table below.

Appliance	No Limits™ Licensing	Adaptive Deduplication	Scalable	Lifetime Upgrade	InCrypt Capable	InCrypt Included	Can Vault?	Can Be Vault?	Can Cross Vault?	eSATA D2D2D Capable	USB 2.0 D2D2D Capable
Recovery-171	✓	✓	✓		✓		✓				✓
Recovery-211	✓	✓	✓	✓	✓		✓				✓
Recovery-311	✓	✓	✓		✓	✓	✓				✓
Recovery-411	✓	✓	✓	✓	✓		✓	✓	✓	✓	✓
Recovery-511	✓	✓	✓		✓	✓	✓	✓	✓	✓	✓
Recovery-611	✓	✓	✓	✓	✓		✓	✓	✓	✓	✓
Recovery-711	✓	✓	✓		✓	✓	✓	✓	✓	✓	✓
Recovery-621	✓	✓	✓	✓	✓		✓	✓	✓	✓	✓
Recovery-721	✓	✓	✓		✓	✓	✓	✓	✓	✓	✓
Recovery-631	✓	✓	✓	✓	✓		✓	✓	✓	✓	✓
Recovery-731	✓	✓	✓		✓	✓	✓	✓	✓	✓	✓

## APPLIANCE COMPARISON

Legend: ● Standard ○ Optional ∅ Not Available

### Unitrends Family of Backup Appliances

Major Features	171	211	311	411	511	611	711	621	721	631	731
Protects 100+ Versions of Operating Systems and Applications	●	●	●	●	●	●	●	●	●	●	●
Point-in-Time Protection	●	●	●	●	●	●	●	●	●	●	●
No Limits™ Licensing <sup>1</sup>	●	●	●	●	●	●	●	●	●	●	●
Adaptive Deduplication™ <sup>2</sup>	●	●	●	●	●	●	●	●	●	●	●
Advanced Compression	●	●	●	●	●	●	●	●	●	●	●
Vault2Cloud™ Enabled	●	●	●	●	●	●	●	●	●	●	●
Private Vaulting Enabled	●	●	●	●	●	●	●	●	●	●	●
iseGrid Scalable	●	●	●	●	●	●	●	●	●	●	●
Lifetime Upgrade™ <sup>3</sup>	∅	●	∅	●	∅	●	∅	●	∅	●	∅
May Serve as Private Vault	∅	∅	∅	●	●	●	●	●	●	●	●
May Cross Vault	∅	∅	∅	●	●	●	●	●	●	●	●
Rapid Recovery Console	●	●	●	●	●	●	●	●	●	●	●
Hot/Cold BareMetal	●	●	●	●	●	●	●	●	●	●	●
Dissimilar BareMetal	●	●	●	●	●	●	●	●	●	●	●
AES-256 Bit Encryption	○	○	●	○	●	○	●	○	●	○	●
Exchange Item Recovery	○	○	○	○	○	○	○	○	○	○	○
Archiving: D2D2D/D2D2T	171	211	311	411	511	611	711	621	721	631	731
USB 2.0	●	●	●	●	●	●	●	●	●	●	●
Recovery-Dock (eSATA)	●	●	●	●	●	●	●	∅	∅	∅	∅
Recovery-Archive (eSATA)	∅	∅	∅	∅	∅	●	●	●	●	●	●
D2D2T (LVD SCSI)	∅	∅	∅	∅	∅	∅	∅	●	●	●	●
Monitoring/Management	171	211	311	411	511	611	711	621	721	631	731
Single Pane of Glass	●	●	●	●	●	●	●	●	●	●	●
Backup Scheduling	●	●	●	●	●	●	●	●	●	●	●
Inclusion/Exclusion Backup	●	●	●	●	●	●	●	●	●	●	●
Bandwidth Throttling	●	●	●	●	●	●	●	●	●	●	●
Detailed Reporting	●	●	●	●	●	●	●	●	●	●	●
Graphical Reporting	●	●	●	●	●	●	●	●	●	●	●
Custom Reporting	●	●	●	●	●	●	●	●	●	●	●
Alert-Based Monitoring	●	●	●	●	●	●	●	●	●	●	●
SMTP-Based E-Mail Reporting	●	●	●	●	●	●	●	●	●	●	●
SNMP Trap	●	●	●	●	●	●	●	●	●	●	●
Logging	●	●	●	●	●	●	●	●	●	●	●
Upgrade Alerting	●	●	●	●	●	●	●	●	●	●	●
One-Click Upgrade	●	●	●	●	●	●	●	●	●	●	●

1 No client or protected capacity fees; licensing enables utilization of all purchased storage of appliance.

2 Deduplication capabilities scale with the capability of the specific appliance.

3 The appliance may be upgraded to the higher capacity instance of the appliance as long as a support contract is in effect. Thus a 621 may be upgraded to a 72x model as long as a support contract is in effect.

## Unitrends Family of Backup Appliances

Appliance Characteristics	171	211	311	411	511	611	711	621	721	631	731
Form Factor	Desktop			Desktop		Rack		Rack		Rack	
Quad Core Processor	●	●	●	●	●	●	●	●	●	●	●
RAM (GB)	4	4	4	4	4	8	8	8	8	8	8
Cold-Swap Drives	●	●	●	●	●	●	●	●	●	●	●
User-Replaceable Drives	∅	∅	∅	∅	∅	●	●	●	●	●	●
Hot Swap Drives	∅	∅	∅	∅	∅	∅	∅	●	●	●	●
Storage	171	211	311	411	511	611	711	621	721	631	731
Single Non-RAID Drive	●	∅	∅	∅	∅	∅	∅	∅	∅	∅	∅
RAID-1	∅	●	●	∅	∅	∅	∅	●	●	●	●
RAID-6	∅	∅	∅	∅	∅	∅	∅	●	●	●	●
RAID-10	∅	∅	∅	●	●	●	●	∅	∅	∅	∅
Formatted Capacity (TB)	0.7	0.9	1.4	1.4	2.8	1.4	2.8	4.2	8.2	7.0	14
Raw Backup Capacity (TB)	0.5	0.7	1.2	1.2	2.5	1.2	2.5	4.2	8.2	7.0	14
6:1 Deduplication (TB)	3	4	7	7	15	7	15	25	49	42	88
10:1 Deduplication (TB)	5	7	12	12	25	12	25	42	82	70	140
Network	171	211	311	411	511	611	711	621	721	631	731
10/100/1000 baseT	●	●	●	●	●	●	●	●	●	●	●
Ethernet Ports	1	1	1	1	1	1	1	2	2	2	2
Platform Characteristics	171	211	311	411	511	611	711	621	721	631	731
<i>Dimensions</i>											
Width	7.48"	7.48"	7.48"	11.8"	11.8"	17.5"	17.5"	18.9"	18.9"	16.75"	16.75"
Height	6.69"	6.69"	6.69"	9.1"	9.1"	1.75"	1.75"	3.75"	3.75"	5.25"	5.25"
Depth	11.02"	11.02"	11.02"	16.9"	16.9"	21.5"	21.5"	26.9"	26.9"	27.5"	27.5"
Unit Weight (Pounds)	8.86	9.86	9.86	27.5	27.5	26	26	58	58	70	70
Shipping Weight (Pounds)	14	15	15	32	32	35	35	64	64	105	105
<i>Power</i>											
AC Inputs	100-240VAC	100-240VAC	100-240VAC	115-230VAC	115-230VAC	100-240VAC	100-240VAC	100-240VAC	100-240VAC	100-240VAC	100-240VAC
AC Power Consumption	270W	270W	270W	500W	500W	520W	520W	Dual Redundant 500W	Dual Redundant 500W	Dual Redundant 500W	Dual Redundant 500W
Total Heat Dissipation	921 BTU Max	921 BTU Max	921 BTU Max	1706 BTU Max	1706 BTU Max	1774 BTU Max	1774 BTU Max	1707 BTU Max	1707 BTU Max	1707 BTU Max	1707 BTU Max
<i>Environmental</i>											
Non-Operating Vibration	350	350	350	350	350	350	350	350	350	350	350
Operating Shock (2ms (Gs))	65	65	65	65	65	65	65	65	65	65	65
Non-Operating Shock (1ms (Gs))	350	350	350	350	350	350	350	350	350	350	350
Support and Warranty	171	211	311	411	511	611	711	621	721	631	731
Silver	○	○	○	○	○	○	○	○	○	○	○
Gold	○	○	○	○	○	○	○	○	○	○	○
Platinum	○	○	○	○	○	○	○	○	○	○	○
Business Critical	○	○	○	○	○	○	○	○	○	○	○

**Unitrends**™  
*Rapid Recovery. Integrated. Simple. Elegant.*

7 Technology Circle, Suite 100  
 Columbia, SC 29203

866.359.5411 • [sales@unitrends.com](mailto:sales@unitrends.com)